

# Histologic Subtypes of Oral Squamous Cell Carcinoma: Prognostic Relevance

**Michele Conceição Pereira, DDS, MSc; Denise Tostes Oliveira, DDS, MSc, PhD;**  
**Gilles Landman, MD, PhD; Luiz Paulo Kowalski, MD, PhD**

## Auteure-ressource

**Dre Oliveira**  
Courriel : [d.tostes@fob.usp.br](mailto:d.tostes@fob.usp.br)



## SOMMAIRE

Les épithéliomas spinocellulaires (ESC) sont les néoplasmes malins les plus répandus dans la cavité buccale. Cependant, la tumeur classique et plusieurs sous-types histologiques de l'ESC présentent des caractéristiques morphologiques et des comportements particuliers lorsqu'ils se manifestent dans la muqueuse buccale. À titre d'exemple, l'ESC basaloïde est une tumeur agressive, tandis que le carcinome verruqueux présente le plus faible potentiel envahissant et métastatique. L'évolution clinique et biologique de ces variantes buccales de l'épithélioma spinocellulaire n'a toutefois pas été complètement établie. De plus, même si de nombreuses manifestations cliniques et histologiques associées aux ESC buccaux ont été définies, aucune ne présente une importance pronostique sans équivoque. Cet article passe en revue les divers sous-types d'ESC buccaux, en mettant en relief les problèmes associés au diagnostic et au pronostic histologiques.

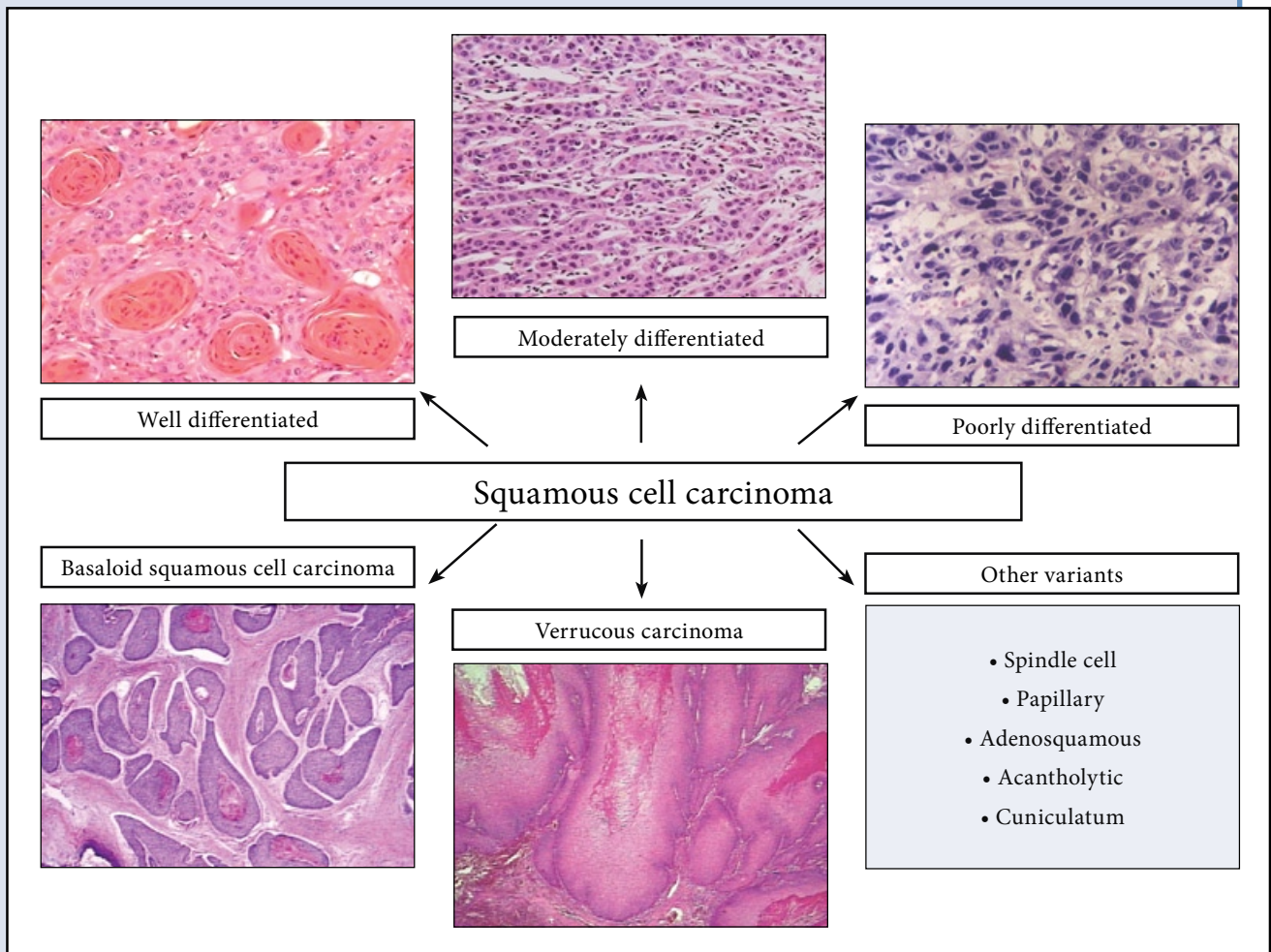
Pour les citations, la version définitive de cet article est la version électronique : [www.cda-adc.ca/jcda/vol-73/issue-4/339.html](http://www.cda-adc.ca/jcda/vol-73/issue-4/339.html)

Cancer is an important public health problem in many parts of the world, and oral cancer is among the 10 most common cancers worldwide.<sup>1</sup> According to the International Agency for Research on Cancer of the World Health Organization (IARC–WHO), cancer rates are expected to increase at an alarming rate: from 10 million new cases globally in 2000 to 15 million in 2020.<sup>2</sup>

In the oral cavity, squamous cell carcinoma (SCC) is the most prevalent malignant neoplasm. Despite the ready accessibility of the oral cavity to direct examination, these malignancies are often still not detected until a late stage and, as a result, the survival rate for oral cancer has remained essentially unchanged over the past 3 decades.<sup>3</sup> In recent years, numerous prognostic factors associated with oral SCC have

been identified,<sup>4–12</sup> some of them inherent to the patient and others associated with the genetic profile of the malignant epithelial cells, which reflect tumour aggressiveness. However, none of the molecular markers associated with the genetic alterations described for oral SCC have shown unequivocal prognostic or predictive significance.<sup>11,12</sup>

The value of histologic classification of conventional oral SCC (well, moderately or poorly differentiated) is controversial, and most authors now recognize that microscopic classification alone is poorly correlated with outcome and response to treatment.<sup>4,11,13</sup> Furthermore, the prognostic value of identifying histologic subtypes of oral SCC (**Fig. 1**), which show characteristic morphology and specific behaviour, has not been clearly established.<sup>14</sup> The main clinicopathologic



**Figure 1:** Histologic subtypes of oral squamous cell carcinoma.

features of and prognosis associated with the most frequent subtypes of oral SCC are summarized in **Table 1**.

This review includes a brief overview of the histologic subtypes of oral SCC, emphasizing the importance of microscopic diagnosis of these variants, which has important clinical implications for the prognosis of the tumour.

### Conventional Squamous Cell Carcinoma

Conventional squamous cell carcinoma (CSCC) is the most frequent neoplasm arising from the oral epithelium (**Fig. 2**) and the risk factors associated with its occurrence, such as tobacco and heavy alcohol consumption, are well established.<sup>1,15,16</sup>

Despite the continuing evolution of diagnostic and therapeutic methods used in oncology, clinical and histopathologic factors with prognostic value for oral CSCC that might aid in more precise selection of patients for various treatment strategies remain inconclusive.<sup>17</sup>

A wide range of tumour features, including size and site, histologic malignant grade, perineural spread at the invasive front, lymphovascular invasion and tumour thickness, have been described as major risk factors that adversely affect the prognosis for patients with oral SCC. Some of these factors involve a series of genetic alterations, which occur in proto-oncogenes and in tumour suppressor genes and reflect the tumour's aggressiveness as well as the risk of metastasis.<sup>15,18</sup> Abnormalities in the p53 gene, frequently identified by genetic markers,<sup>12,15,16,19</sup> are likely one of the early events in the development of oral SCC.

The presence of 2 or more positive regional nodes, extracapsular extension of nodal disease and positive margin resection<sup>15</sup> have also been correlated with poor prognosis. Although the quality of treatment is of paramount importance, most analyses of prognostic factors have failed to show any relation between treatment and survival rate.<sup>16</sup> Furthermore, due to the limited

**Table 1** Comparison of clinicopathologic features and prognosis of conventional squamous cell carcinoma (CSCC), verrucous carcinoma (VC) and basaloid squamous cell carcinoma (BSCC)

	Histologic subtypes of oral cancer		
	CSCC	VC	BSCC
<b>Clinical features</b>	Ulcerated appearance	Cauliflower-like appearance	Ulcerated appearance
<b>Preferential sites</b>	Tongue Floor of the mouth	Buccal mucosa Hard palate	Base of the tongue Floor of the mouth
<b>Histopathologic features</b>	Variable degree of keratinization, pleomorphism and mitotic activity	Intense keratinization, compressive pattern and minimal atypia	Basaloid pattern in intimate association with a squamous component
<b>Metastatic potential</b>	High	Absent	High (similar to poorly differentiated CSCC)
<b>Prognosis</b>	Poor	Excellent	Poor (similar to poorly differentiated CSCC)

prognostic value of conventional clinical tumour–nodal–metastasis (TNM) staging and histopathologic grading in oral cancer, many patients are still over- or under-treated, resulting in significant personal and socioeconomic impact.<sup>5</sup> Intriguingly, 2 well-established histologic predictive factors — tumour thickness and extracapsular spread of nodal metastases — have not become part of routine TNM classification.<sup>11</sup>

According to Pindborg and others,<sup>4</sup> oral SCCs are classified microscopically based on a method which takes into account a subjective assessment of the degree of keratinization, cellular and nuclear pleomorphism and mitotic activity. The grades are well differentiated (grade 1), moderately differentiated (grade 2) and poorly differentiated (grade 3). Well and moderately differentiated tumours can be grouped together as low grade and poorly differentiated and undifferentiated tumours as high grade.

Generally, histologic grading of malignancy has limited impact on survival rate due to the subjective nature of the assessment of various features; the fact that the small biopsies from these neoplasms may show considerable histologic heterogeneity; poor tissue preservation; reliance on tumour cell structure rather than functional characteristics; and evaluation of tumour cell features in isolation from those of the surrounding supporting tissues and cells.<sup>4,6,9</sup>

Furthermore, the growth of the malignant tumour is frequently accompanied by a dense inflammatory infiltrate. A still-unanswered question is whether these cells are involved in promoting progression of tumours or in their destruction. The protective role of inflammatory cells in the development of tumours has been demonstrated in a series of studies.<sup>18</sup> Our own experience<sup>7</sup> has confirmed that cells such as eosinophils may play a protective role against tumour progression. In our experience, intense tumour-associated tissue eosinophilia obtained by morphometric analysis was

an independent favourable prognostic factor for 125 patients submitted to surgical treatment for clinical stage II and III primary SCC located within the oral cavity.

According to Woolgar<sup>11</sup> the identification of accurate prognosticators in oral SCC has been hampered by the relatively small number of cases of the disease, especially in any one treatment centre; by the heterogeneity of clinical features, such as the extent of the disease at presentation; and, in particular, by the lack of standard clinical, management and laboratory protocols combined with inconsistent recording and reporting of data. We agree with this author's suggestion that more efficient research and development would occur with less reliance on subjective interpretation and the wider use of standardized databases, automated techniques, quantitative data and the ability to exchange information.

### Verrucous Carcinoma

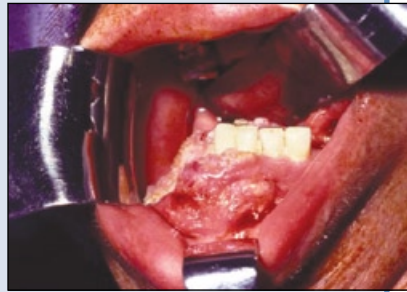
The lesser aggressiveness of verrucous carcinoma (VC) reinforces its classification as a well-differentiated variant of oral SCC with an excellent prognosis and indolent clinical behaviour.<sup>20–30</sup>

Although the mucous membranes of the head and neck are the most common sites of VC development, especially the oral cavity and larynx, this tumour may also be found on other cutaneous surfaces including the anorectal region, external genitals and skin of the extremities, particularly the sole of the foot.<sup>23,30,31</sup>

Since Ackerman's<sup>20</sup> original description, there have been ongoing discussions regarding the etiology of oral VC. The pathogenesis of this neoplasm has been associated with benign verrucous lesions<sup>22,31</sup> and tobacco carcinogenic factors, especially those related to tobacco chewing.<sup>21,24,28–31</sup> However, there are also reports of patients who developed oral VC without a history of smoking.<sup>23,26,32</sup> A probable



**Figure 2:** Conventional squamous cell carcinoma in the floor of the mouth.



**Figure 3:** Clinical presentation of verrucous carcinoma arising from gingiva.

relation between oral VC and human papillomavirus has also been suggested. A more acceptable hypothesis is that opportunist viral activity associated with chronic tobacco and alcohol consumption may be involved in the pathogenesis of this neoplasm.<sup>33–35</sup>

Clinically, VC in the oral cavity is characterized by a cauliflower-like exophytic growth with a cleft, warty, whitish-to-gray surface which may have erythematous areas<sup>4,20–24,26,28,29</sup> (Fig. 3). Despite being curable in the early stages, this neoplasia can become locally invasive if it is not treated correctly.<sup>20,23,24,31</sup>

Microscopically, VC is a predominantly exophytic growth of well-differentiated stratified squamous epithelium with deep bulbous rete ridges that exhibit little or no cytologic atypia and deep surface invaginations filled with parakeratin or orthokeratin (Fig. 1). The lesion's margins show a compressive growth pattern and local destruction of connective tissue can occur in advance of the deep epithelial (“pushing”) border. Despite exaggerated rete pegs, the associated basement membrane appears intact.<sup>4,14,22,23</sup> In the most advanced stages, bone, salivary glands, muscles and cartilage involvement can be seen. However, distant metastasis<sup>24</sup> and regional lymph node involvement, which occur in conventional SCC, are rare.<sup>4,14</sup>

The establishment of a clinical or histopathologic diagnosis of VC in the oral cavity may be difficult.<sup>23</sup> It depends heavily on close collaboration between clinician and pathologist and the availability of a sufficiently large biopsy specimen.<sup>26,27,31,36</sup>

Some investigators have described “hybrid” lesions, seen when tumours present the dominant microscopic features of VC, but also contain small areas of tumour invasion, which are common in conventional SCCs.<sup>14,36</sup> However, others consider that the presence of tumour invasion demands a histopathologic diagnosis of SCC, because this indicator will dictate clinical treatment.

Although adequate surgical excision remains the treatment of choice for the oral VC,<sup>24,28,31,37</sup> chemotherapy, alone or in combination with radiotherapy,<sup>25,31,37,38</sup> has also been

employed as initial treatment. Radiation therapy alone has been contraindicated due to the possibility of anaplastic transformation from oral VC to more aggressive SCC.<sup>31,38</sup>

The local recurrence of oral VC has been reported frequently.<sup>21,22,31,33,38</sup> Our own retrospective study<sup>39</sup> of 3,500 primary oral well-differentiated SCCs surgically excised between 1980 and 2002, in which 20 oral VCs were identified and treated by excision surgery, showed 38.5% local recurrence rate. The tumours occurred mainly in men older than 60; the sites of most common occurrence were the lower lip

and the hard palate. Regional recurrence and distant metastasis were not verified in our sample of oral VCs and all cases presented free surgical margins. Based on these results, we suggest that, although it is rare and is associated with an excellent prognosis, VC has an intrinsic potential for local recurrence that should be considered when planning surgery.

### Basaloid Squamous Cell Carcinoma

Basaloid squamous cell carcinoma (BSCC) is a rare and aggressive variant of SCC that was first identified as a separate histopathologic entity by Wain and others.<sup>40</sup> This tumour has a predilection for the head and neck region and occurs mainly in the larynx, hypopharynx, oropharynx, epiglottis and at the base of the tongue.<sup>4,41</sup>

Cadier and others<sup>42</sup> first reported it in the oral cavity, and isolated lesions have been described in the palate,<sup>43,44</sup> floor of the mouth<sup>45</sup> and tuberosity area of the maxilla.<sup>46</sup> BSCC is most prevalent among men who are in the sixth or seventh decade of life and have a history of heavy smoking and alcohol abuse. Clinically, the tumour appears as an ulcerated, exophytic, firm mass.<sup>12,40,47,48</sup>

Microscopically, BSCC can have lobular, cord-like, cribriform, tubular, glandular-like or nest patterns, focally connected to the surface epithelium.<sup>49</sup> Cells at the periphery of the lobules are often palisaded, with hyperchromatic nuclei and scant cytoplasm. The central areas of the lobules are characterized by cystic spaces, sometimes containing material resembling mucin, which stains with periodic acid-Schiff, and displaying comedonecrosis (Fig. 1). The distinctive histologic feature of this neoplasm is its appearance as an SCC in intimate relation with a basaloid component.<sup>4,12,40</sup>

It is difficult to establish a diagnosis of BSCC in the head and neck region confidently when only a small specimen is available for biopsy.<sup>50</sup> The lack of a representative sample containing a basaloid component associated (or not) with a squamous component or the lack of continuity with the epithelium of the oral mucosa could lead to diagnosis of

poorly differentiated SCC or salivary gland tumours, particularly adenoid cystic carcinoma.<sup>47,51-53</sup> Therefore, when a diagnosis of poorly differentiated SCC is established by incisional biopsy, the possibility of a BSCC should not be excluded, especially when the lesion is located in the oropharynx or base of the tongue.

The clinical course and prognosis of BSCC have been considered worse than for conventional SCC based on its aggressive biological behaviour characterized by early local or regional recurrences and distant metastasis, as well as lower reported survival rates.<sup>41,46,49-52</sup> However, few studies have compared the clinical course and biological behaviour of oral BSCC and SCC<sup>50,51,54</sup> and sample sizes are too small to be representative or allow the establishment of a prognosis.

In a review of BSCCs affecting only the oral cavity, Sampaio-Goes and others<sup>12,48</sup> compared 17 BSCCs with well, moderately and poorly differentiated SCCs, matched by stage and site, in terms of clinical and biologic course, outcome, treatment and prognosis. The authors concluded that the clinical and biological course of BSCC is similar to that of SCC when clinical stage and site are matched. Thus, they suggest that patients with these malignant neoplasms undergo the same therapeutic protocols as for SCC.

### Other Histologic Variants of Squamous Cell Carcinoma

Several subtypes of oral SCC, including spindle-cell carcinoma, papillary SCC, adenosquamous carcinoma, acantholytic SCC and carcinoma cuniculatum, were considered in the classification adopted by the IARC-WHO.<sup>14</sup> Most described cases of these malignant neoplasms have been in the larynx and hypopharynx.

Due to the small number of reported cases of these histologic subtypes in the oral cavity,<sup>11,39</sup> information about their prognosis and clinical-biological behaviour has not been established.<sup>4,14</sup>

### Conclusion

Although SCC is the most frequent malignant neoplasm of the oral cavity, its clinical and biological course and the prognosis associated with its histologic variants have not been completely established, probably due to the low frequency of these subtypes in the oral cavity. In addition, many histologic variants of SCC are misdiagnosed, either because the biopsy sample is not adequately representative or because of the difficulty of establishing a diagnosis based on histopathologic features with routine hematoxylin-eosin staining. Multiple biopsies from various areas of the lesion should be obtained to ensure correct diagnosis of the subtypes.

Microscopic identification of the various histologic subtypes of SCC should be emphasized among pathologists to contribute to consistent knowledge of clinical and biological tumour behaviour in the oral cavity and result in more accurate treatment protocols. ♦

### THE AUTHORS



**Dr. Pereira** is a PhD student in the department of stomatology, division of pathology, Bauru School of Dentistry, University of São Paulo, Brazil.



**Dr. Oliveira** is associate professor in the department of stomatology, division of pathology, Bauru School of Dentistry, University of São Paulo, Brazil.



**Dr. Landman** is a pathologist in the department of pathology, A.C. Camargo Cancer Hospital, São Paulo, Brazil.



**Dr. Kowalski** is director, department of head and neck surgery and otorhinolaryngology, A.C. Camargo Cancer Hospital, São Paulo, Brazil.

**Correspondence to:** Dr. Denise Tostes Oliveira, Department of Stomatology, Division of Pathology, Bauru School of Dentistry, Alameda Octávio Pinheiro Brisolla, 9-75 CEP 17012-901, Bauru, São Paulo, Brazil.

The authors have no declared financial interests.

This article has been peer reviewed.

### References

1. Scully C, Newman L, Bagan JV. The role of the dental team in preventing and diagnosing cancer: 2. Oral cancer risk factors. *Dent Update* 2005; 32(5):261-2, 264-6, 269-70.
2. Mignogna MD, Fedele S, Lo Russo L. The World Cancer Report and the burden of oral cancer. *Eur J Cancer Prev* 2004; 13(2):139-42.
3. Neville BW, Day TA. Oral cancer and precancerous lesions. *CA Cancer J Clin* 2002; 52(4):195-215.
4. Pindborg JJ, Reichart PA, Smith CJ, van der Wall I. Histological typing of cancer and precancer of the oral mucosa. 2nd ed. Berlin: Springer-Verlag; 1997. p. 10-6.
5. Bankfalvi A, Piffko J. Prognostic and predictive factors in oral cancer: the role of the invasive tumour front. *J Oral Pathol Med* 2000; 29(7):291-8.
6. Po Wing Yuen A, Lam KY, Lam LK, Ho CM, Wong A, Chow TL, and others. Prognostic factors of clinically stage I and II oral tongue carcinoma — a comparative study of stage, thickness, shape, growth pattern, invasive front malignancy grading, Martinez-Gimeno score, and pathologic features. *Head Neck* 2002; 24(6):513-20.
7. Dorta RG, Landman G, Kowalski LP, Lauris JR, Latorre MR, Oliveira DT. Tumor-associated tissue eosinophilia as a prognostic factor in oral squamous cell carcinoma. *Histopathology* 2002; 41(2):152-7.
8. Karakida K, Ota Y, Aoki T, Yamazaki H, Tsukinoki K. Examination of factors predicting occult metastasis of the cervical lymph nodes in T1 and T2 tongue carcinoma. *Tokai J Exp Clin Med* 2002; 27(3):65-71.
9. O-charoenrat P, Pillai G, Patel S, Fisher C, Archer D, Eccles S, and other. Tumour thickness predicts cervical nodal metastases and survival in early oral tongue cancer. *Oral Oncol* 2003; 39(4):386-90.
10. Kurokawa H, Zhang M, Matsumoto S, Yamashita Y, Tomoyose T, Tanaka T, and others. The high prognostic value of the histologic grade at the deep invasive front of tongue squamous cell carcinoma. *J Oral Pathol Med* 2005; 34(6):329-33.
11. Woolgar JA. Histopathological prognosticators in oral and oropharyngeal squamous cell carcinoma. *Oral Oncol* 2006; 42(3):229-39. Epub 2005 Sep 16.
12. Sampaio-Goes FC, Oliveira DT, Dorta RG, Nonogaki S, Landman G, Nishimoto IN, and other. Expression of PCNA, p53, Bax and Bcl-X in oral poorly differentiated and basaloid squamous cell carcinoma: relationships with prognosis. *Head Neck* 2005; 27(11):982-9.
13. Heffner DK. Let's make grading of squamous cell carcinomas more meaningful to clinicians (via "Ed's Insight"). *Ann Diagn Pathol* 2002; 6(6):399-403.

14. Barnes L, Eveson JW, Reichart P, Sidransky D. Oral cavity and oropharynx. In: Barnes L, Eveson JW, Reichart P, Sidransky D, editors. World Health Organization classification of tumours. Pathology and genetics of head and neck tumours. Lyon: International Agency for Research on Cancer Press; 2005. p. 164–208.
15. Johnson N, Franceschi S, Ferlay J, Ramadas K, Schmid S, MacDonald DG, and others. Squamous cell carcinoma. In: Barnes L, Eveson JW, Reichart P, Sidransky D, editors. World Health Organization classification of tumours. Pathology and genetics of head and neck tumours. Lyon: International Agency for Research on Cancer Press; 2005. p. 168–75.
16. Strong EW, Kasdorf H, Henk JM. Squamous cell carcinoma of the head and neck. In: Hermanek P, Gospodarowicz MK, Henson DE, Hutter RV, Sobin LH, editors. Prognostic factors in cancer. New York: Springer; 1996. p. 13–20.
17. Bundgaard T, Rossen K, Henriksen SD, Charabi S, Sogaard H, Grau C. Histopathologic parameters in the evaluation of T1 squamous cell carcinomas of the oral cavity. *Head Neck* 2002; 24(7):656–60.
18. Jakobisiak M, Lasek W, Golab J. Natural mechanisms protecting against cancer. *Immunol Lett* 2003; 90(2-3):103–22.
19. Gonzalez-Moles MA, Galindo P, Gutierrez-Fernandez J, Sanchez-Fernandez E, Rodriguez-Archilla A, Ruiz-Avila I, and other. P53 protein expression in oral squamous cell carcinoma: survival analysis. *Anticancer Res* 2001; 21(4B):2889–94.
20. Ackerman LV. Verrucous carcinoma of the oral cavity. *Surgery* 1948; 23:670–8.
21. Kraus F, Perezmesa C. Verrucous carcinoma. Clinical and pathologic study of 105 cases involving oral cavity, larynx and genitalia. *Cancer* 1966; 19(1):26–38.
22. Jacobson S, Shear M. Verrucous carcinoma of the mouth. *J Oral Pathol* 1972; 1(2):66–75.
23. McCoy JM, Waldron CA. Verrucous carcinoma of the oral cavity. A review of forty-nine cases. *Oral Surg Oral Med Oral Pathol* 1981; 52(6):623–9.
24. Rajendran R, Sugathan CK, Augustine J, Vasudevan DM, Vijayakumar T. Ackerman's tumour (Verrucous carcinoma) of the oral cavity: a histopathologic study of 426 cases. *Singapore Dent J* 1989; 14(1):48–53.
25. Jyothirmayi R, Sankaranarayanan R, Varghese C, Jacob R, Nair MK. Radiotherapy in the treatment of verrucous carcinoma of the oral cavity. *Oral Oncol* 1997; 33(2):124–8.
26. Bouquot JE. Oral verrucous carcinoma. Incidence in two US populations. *Oral Surg Oral Med Oral Pathol Oral Radiol Endod* 1998; 86(3):318–24.
27. Ferlito A, Rinaldo A, Mannara GM. Is primary radiotherapy an appropriate option for the treatment of verrucous carcinoma of the head and neck? *J Laryngol Otol* 1998; 112(2):132–9.
28. Spiro RH. Verrucous carcinoma, then and now. *Am J Surg* 1998; 176(5):393–7.
29. Kaugars GE, Abbey LM, Burns JC, Page DG, Svirsky JA. Oral verrucous carcinoma. *Oral Surg Oral Med Oral Pathol Oral Radiol Endod* 1999; 87(3):268–9.
30. Chagin AL. Factores de riesgo etiopatogenicos del carcinoma verrugoso en cavidad bucal. *Acta Odontol Venez* 2000; 38(2):9–14.
31. Koch BB, Trask DK, Hoffman HT, Karnell LH, Robinson RA, Zhen W, and others. National survey of head and neck verrucous carcinoma: patterns of presentation, care, and outcome. *Cancer* 2001; 92(1):110–20.
32. Link JO, Kaugars GE, Burns JC. Comparison of oral carcinomas in smokeless tobacco users and nonusers. *J Oral Maxillofac Surg* 1992; 50(5):452–5.
33. Eisenberg E, Rosenberg B, Krutchkoff DJ. Verrucous carcinoma: a possible viral pathogenesis. *Oral Surg Oral Med Oral Pathol* 1985; 59(1):52–7.
34. Adler-Storhtz K, Newland JR, Tessin BA, Yeudall WA, Shillitoe EJ. Human papillomavirus type 2 DNA in oral verrucous carcinoma. *J Oral Pathol* 1986; 15(9):472–5.
35. Saito T, Nakajima T, Mogi K. Immunohistochemical analysis of cell cycle-associated proteins p16, pRb, p53, p27 and Ki-67 in oral cancer and precancer with special reference to verrucous carcinomas. *J Oral Pathol Med* 1999; 28(5):226–32.
36. Niparko JK, Rubinstein MI, McClatchey KD. Invasive squamous cell carcinoma within verrucous carcinoma. *J Otolaryngol* 1988; 17(1):38–40.
37. Pomatto E, Bocca M, Carbone V, Vercellino V. [Verrucous carcinoma of the oral cavity. Personal experience with combined chemo-surgical-treatment]. [Article in Italian] *Minerva Chir* 1993; 48(5):213–9.
38. Yoshimura Y, Mishima K, Obara S, Nariai Y, Yoshimura H, Mikami T. Treatment modalities for oral verrucous carcinomas and their outcomes: contribution of radiotherapy and chemotherapy. *Int J Clin Oncol* 2001; 6(4):192–200.
39. Oliveira DT, Moraes RV, Fiamengui Filho J, Neto JF, Landman G, Kowalski LP. Oral verrucous carcinoma: a retrospective study in São Paulo Region, Brazil. *Clin Oral Investig* 2006; 10(3):205–9.
40. Wain SL, Kier R, Vollmer RT, Bossen EH. Basaloid-squamous carcinoma of the tongue, hypopharynx, and larynx: report of 10 cases. *Hum Pathol* 1986; 17(11):1158–66.
41. Klijanienko J, el-Naggar A, Ponzio-Prion A, Marandas P, Mischeau C, Caillaud JM. Basaloid squamous carcinoma of the head and neck. Immunohistochemical comparison with adenoid cystic carcinoma and squamous cell carcinoma. *Arch Otolaryngol Head Neck Surg* 1993; 119(8):887–90.
42. Cadier MA, Kelly SA, Parkhouse N, Brough MD. Basaloid squamous carcinoma of the buccal cavity. *Head Neck* 1992; 14(5):387–91.
43. Lovejoy HM, Matthews BL. Basaloid-squamous carcinoma of the palate. *Otolaryngol Head Neck Surg* 1992; 106(2):159–62.
44. Hellquist HB, Dahl F, Karlsson MG, Nilsson C. Basaloid squamous cell carcinoma of the palate. *Histopathology* 1994; 25(2):178–80.
45. Campman SC, Gandour-Edwards RF, Sykes JM. Basaloid squamous carcinoma of the head and neck. Report of a case occurring in the anterior floor of the mouth. *Arch Pathol Lab Med* 1994; 118(12):1229–32.
46. Wedenberg C, Jesslen P, Lundqvist G, Lundgren J, Hellquist HB. Basaloid squamous cell carcinoma of the maxilla. *Oral Oncol* 1997; 33(2):141–4.
47. Altavilla G, Mannara GM, Rinaldo A, Ferlito A. Basaloid squamous cell carcinoma of the oral cavity and oropharynx. *ORL J Otorhinolaryngol Relat Spec* 1999; 61(3):169–73.
48. de Sampaio Goes FC, Oliveira DT, Dorta RG, Nishimoto IN, Landman G, Kowalski LP. Prognoses of oral basaloid squamous cell carcinoma and squamous cell carcinoma: a comparison. *Arch Otolaryngol Head Neck Surg* 2004; 130(1):83–6.
49. Banks ER, Frierson HF Jr, Mills SE, George E, Zarbo RJ, Swanson PE. Basaloid squamous cell carcinoma of the head and neck. A clinicopathologic and immunohistochemical study of 40 cases. *Am J Surg Pathol* 1992; 16(10):939–46.
50. Abiko Y, Muramatsu T, Tanaka Y, Ohuchi T, Satoh M, Okumura K, and others. Basaloid-squamous cell carcinoma of the oral mucosa: report of two cases and study of the proliferative activity. *Pathol Int* 1998; 48(6):460–6.
51. Coppola D, Catalano E, Tang CK, Eifenbein IB, Harwick R, Mohr R. Basaloid squamous cell carcinoma of floor of the mouth. *Cancer* 1993; 72(8):2299–305.
52. Raslan WF, Barnes L, Krause JR, Contis L, Killeen R, Kapadia SB. Basaloid squamous cell carcinoma of the head and neck: a clinicopathologic and flow cytometric study of 10 new cases with review of English literature. *Am J Otolaryngol* 1994; 15(3):204–11.
53. Barnes L, Ferlito A, Altavilla G, MacMillan C, Rinaldo A, Dogliani C. Basaloid squamous cell carcinoma of the head and neck: clinicopathologic features and differential diagnosis. *Ann Otol Rhinol Laryngol* 1996; 105(1):75–82.
54. Coletta RD, Cotrim P, Vargas PA, Villalba H, Pires FR, de Moraes M, and other. Basaloid squamous carcinoma of the oral cavity: report of 2 cases and study of AgNOR, PCNA, p53, and MMP expression. *Oral Surg Oral Med Oral Pathol Oral Radiol Endod* 2001; 91(5):563–9.